

# Landscape Change Monitoring System (LCMS)

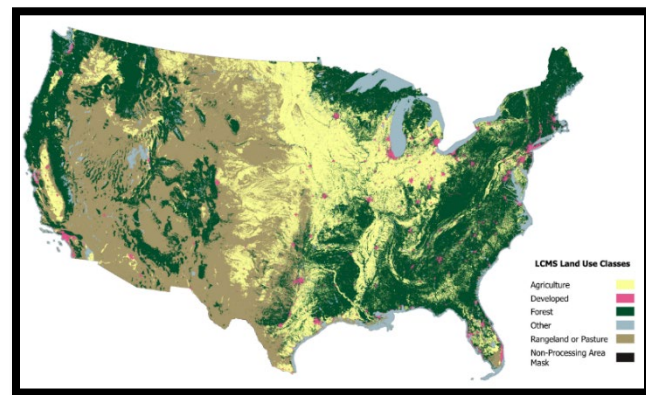
## The *where*, *when*, and *why* of landscape change

*LCMS provides critical data and reporting tools to equip land managers with the insights necessary for informed land management planning including support of active forest management and monitoring post-disaster recovery.*

### Annual Data Products: 1985 - 2025

LCMS offers a powerful lens through which to monitor and analyze landscape dynamics. Leveraging advances in remote sensing-based change detection techniques, LCMS produces **annual land cover, land use, and vegetation cover change data** across the conterminous United States, Alaska, Puerto Rico, U.S. Virgin Islands\*, and Hawaii\* from **1985 through the most recent completed growing season**.

\*2025 annual update for PRUSVI and Hawaii will be available summer 2026.

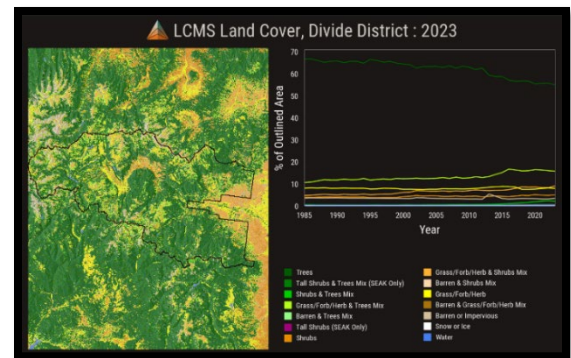


### How Can LCMS be used?

LCMS provides its end-users tools to **quickly visualize** and **generate reports** which facilitate tracking and analysis of land cover and land use across the United States, essential for planning at the local, regional, and national levels.

- **Active Forest Management:** LCMS provides trends and tools for monitoring successional vegetation growth across the landscape to support silviculture activities and active forest management.
- **Fire & Fuels Management:** LCMS maps the effects of fire across the landscape, documenting vegetation changes due to wildland and prescribed fire.
- **Disaster and Recovery:** LCMS can be used to identify areas and impacts from natural disasters, such as hurricanes and tornados. The data helps directly support strategic response to disturbances, optimize resource allocation, and inform management plans.
- **Safety:** LCMS can be used to characterize and highlight areas with disturbance such as tree mortality, wind events, and other characteristics of change that may make access to the national forests unsafe.
- **Access to National Forests:** LCMS data can be instrumental in documentation of land use and land cover to support planning opportunities for multiple use as well as documentation of landscape changes that may impact access.

*These innovative products allow users to quickly visualize and monitor landscapes providing economical and efficient data analysis for land managers in support of sound stewardship*



*LCMS also tracks post-fire recovery and vegetation successional growth highlighting regeneration successes and needs for restoration work*

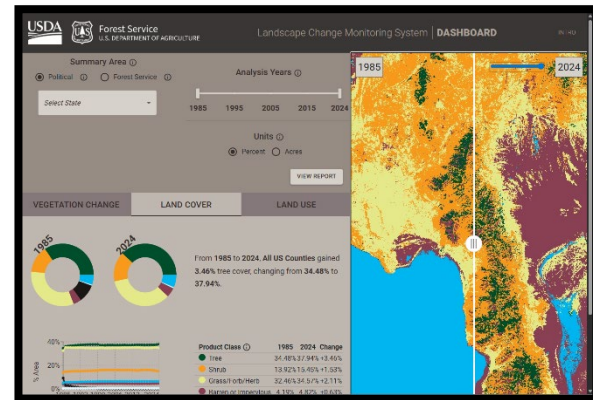
# How to Access LCMS Tools and Data

LCMS data and suite of tools are available publicly providing an accessible resource for sharing data and communicating how our landscapes have changed. Additionally, LCMS data is agnostic of land ownership and provides a seamless, comprehensive dataset for use on and off National Forest System lands.

## Dashboard Reporting

The new interactive [dashboard](#) allows users to quickly explore LCMS data, gain insights, and share their findings.

- **Summarize change:** Generate charts to quantify changes and track trends at the following levels:
  - State / Country
  - Region / National Forest or Grassland / District
- **Visualize Change:** Users can define their analysis period and compare spatial data side by side.
- **Share your findings:** Quickly generate and download PDF reports for your interest area.

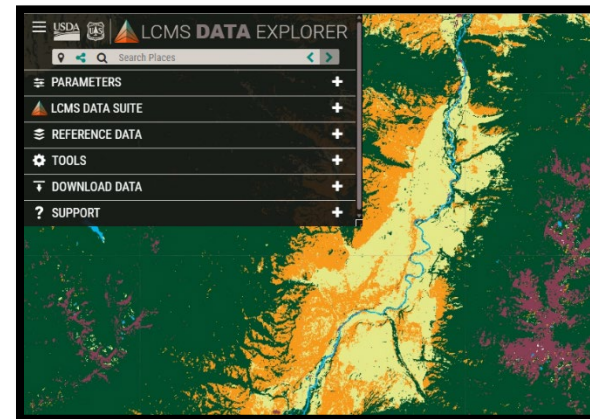


*New dashboard provides a simple interface for exploring data and generates reports with a few clicks*

## Data Explorer & Analysis Tools

The [LCMS Data Explorer](#) allows advanced users to further interact with the data and access the full potential of the time-series data products.

- **Understand the timing and nature of changes:** Explore when and where change has happened at multiple scales, adjust to specific years, or overlay your area of interest.
- **Create time-lapses:** Watch how landscapes have transformed over decades in an animated way.
- **Analyze change:** Chart changes over time or create interactive diagrams to understand how areas have transitioned from one class to another.



*Share and collaborate: Generate links to your custom map or chart and easily share your findings with your peers*

## Quick Access to Data



LCMS data is readily available via:

- [The LCMS Home Page](#)
- [FS Raster Gateway \(Data Clearinghouse\)](#)
- [Google Earth Engine data catalog](#)

For More Information, visit: <https://apps.fs.usda.gov/lcms-viewer/home.html>